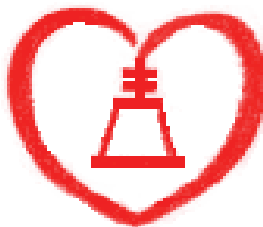

HAMM

Background and Mission

- The mission of the Volunteer Center of Riverside County is to link people in need with those who can help. The Volunteer Center of Riverside County has a 42-year history developing programs in response to community need.
- The Alternative Sentencing Program is a division of the Volunteer Center, providing the Judicial System Alternative Sentencing Options for over 42 years. Programs such as MONITORING, COMMUNITY SERVICE, TEMPO, THE VICTIM IMPACT PANEL (MADD), IGNITION INTERLOCK PROGRAM and ELECTRONIC HOME DETENTION MONITORING with in home alcohol testing.
- MADD (Mothers Against Drunk Driving), Alternative Sentencing Program and Riverside County Judicial System is a collaborative effort to educate Riverside County clients of the negative consequences of being under the influence of a control substance while driving or in public.
- MADD's Mission is to stop drunk driving, support the victims of this violent crime and prevent underage drinking. (Call 211 for more information)

For more
information on
HAMM contact



ALTERNATIVE SENTENCING PROGRAM

A Division of the Volunteer Center

HAMM

HOSPITAL AND MORGUE MENTORING



Cars + (Drugs / Alcohol) = Injury & Death
Reckless Behavior

Volunteer Center of Riverside
2060 University Ave
Riverside, CA 92507
(951) 686-4402



WHAT IS HAMM

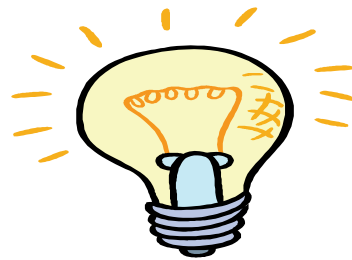
HAMM is five-week, ten hour, multi-component, drug and alcohol education program

- Alternative Sentencing/court diversion option for young adults identified at risk.
- Early intervention program for first time, adult offenders 20 years and older.
- Exposes clients to the legal, financial, emotional and social consequences of driving while impaired.
- Collaborative program supported by Mothers Against Drunk Drivers—Riverside County Chapter and Riverside County Judicial System.



GOALS OF HAMM

- To educate and expose at risk young adults to the realities of driving while impaired.
- To educate HAMM clients to make responsible choices related to drugs/alcohol.
- To educate HAMM clients of the negative impact on their family, friends and community.
- To reduce injuries and deaths.



HAMM DOES NOT

- Condemn or pass judgment
- Preach alcohol/drug abstinence
- Accept or approve irresponsible behavior

HOW HAMM WORKS

The Volunteer Center of Riverside County administers and operates all day to day program responsibilities.

- Participants are referred by: Riverside County *Courts, and may be Self Referred.*
- Cost/fees: \$150.00. Payment schedules and sliding scale are available (Fee includes a donation to MADD)
- HAMM is a 5 week 10 hour program
- Participants must complete all 5 **HAMM** components.

PROGRAM REQUIREMENTS

- | | |
|--|-----------------|
| 1) Intake Interview at a Participating Volunteer Center Office in Riverside County | =1 hr. |
| 2) Trauma Center Observation | = 2 hrs. |
| 3) Coroner's Video and MADD Victim Impact Panel Presentation | = 2 hrs. |
| 4) Independent Home Activity
1000 word essay | = 4 hrs. |
| 5) Debriefing and Exit interview | =1hr. |
| TOTAL PROGRAM HOURS | =10 hrs. |

